

\$1,790,000 - 788 Heatherwood Drive, HOOVER

MLS® #1289220

\$1,790,000

5 Bedroom, 5.00 Bathroom, 5,180 sqft
Residential on 1.87 Acres

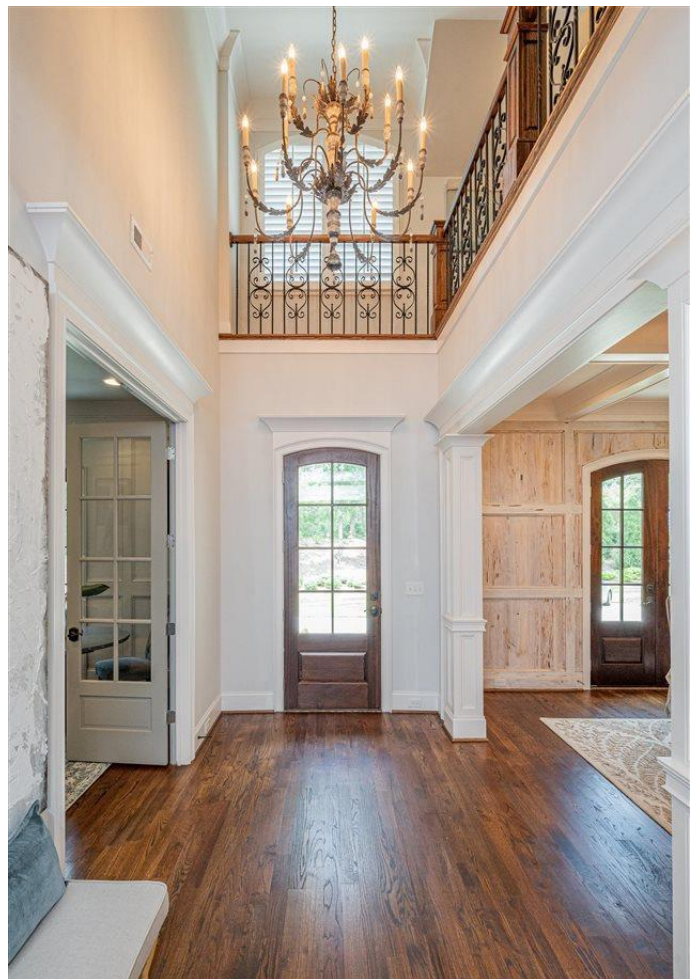
HEATHERWOOD, HOOVER, Alabama

Prepare to fall in love with this jaw-dropping beauty! Beyond the stunning entryway and past the tasteful front facade is a home designed for your comfort and convenience. The first level is totally warm and inviting, but glamorous and modern at the same time. The large family room, gourmet kitchen and enchanting keeping room makes this perfect for entertaining especially with the large rear patio directly accessible off the main areas. A lovely, unique dining room and library/office adds to the beauty of the main level. The master bedroom and bath has all the feels with a grand shower, free standing soaking tub and marble floors. Separate vanities, water closets and dressing rooms/closets make this a show stopper! This home's upper floor includes a loft, 4 bedrooms with 3 baths and a second laundry room. Other features include: outdoor waterfall, arbor, large back yard, gorgeous landscaping and main level and basement garages. A full unfinished basement allows plans for growth.

Built in 2017

Essential Information

MLS® #	1289220
Price	\$1,790,000
Bedrooms	5
Bathrooms	5.00
Full Baths	4



Half Baths	1
Square Footage	5,180
Acres	1.87
Year Built	2017
Type	Residential
Sub-Type	ConvSingleFamily
Status	Active

Community Information

Address	788 Heatherwood Drive
Area	N Shelby/Hoover
Subdivision	HEATHERWOOD
City	HOOVER
County	Shelby
State	Alabama
Zip Code	35244

Amenities

Parking Spaces	5
Parking	Attached, Basement Parking, Main Level

Interior

Interior	Carpet, Hardwood, Marble, Tile
Interior Features	French Doors, Recess Lighting, Security System, Sound System, Wet Bar
Appliances	Compactor Built-In, Convection Oven, Cooktop-Gas, Dishwasher Built-In, Disposal, Ice Maker Built-In, Microwave Built-In, Oven-Electric, Self-Cleaning, Refrigerator, Some Stainless Appl
Heating	Central, Dual Systems, Gas Heat
Cooling	Central, Dual Systems, Electric
Fireplace	Yes
# of Fireplaces	2
Fireplaces	Brick, Gas Starter, Marble, Great Room, Hearth/Keeping Room, Woodburning
Stories	1.5Story
Has Basement	Yes
Basement	Full Basement, All Unfinished, Poured Concrete Walls

Exterior

Exterior Features	Lighting System, Porch, Sprinkling System
Construction	4 Side Brick, Siding-Hardiplank, Stone
Foundation	Basement

School Information

Elementary	ROCKY RIDGE
Middle	BERRY
High	SPAIN PARK

Additional Information

HOA Fees	240
HOA Fees Freq.	Yearly

Listing Details

Listing Office	Embridge Realty, LLC
----------------	----------------------

IDX information offered by The Greater Alabama MLS®, Inc. is provided exclusively for consumers' personal, non-commercial use, it may not be used for any purpose other than to identify prospective properties consumers may be interested in purchasing, and the content is not guaranteed accurate by the MLS®